

We test, You produce

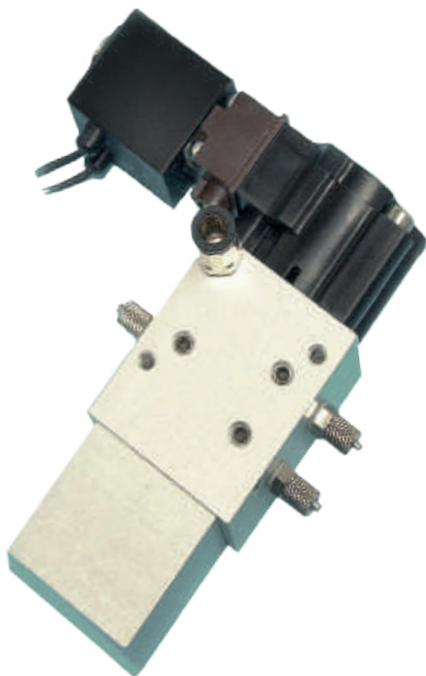
Y VALVE & MINI Y VALVE

LEAK PROOF WITH INTERNAL PRESSURISATION

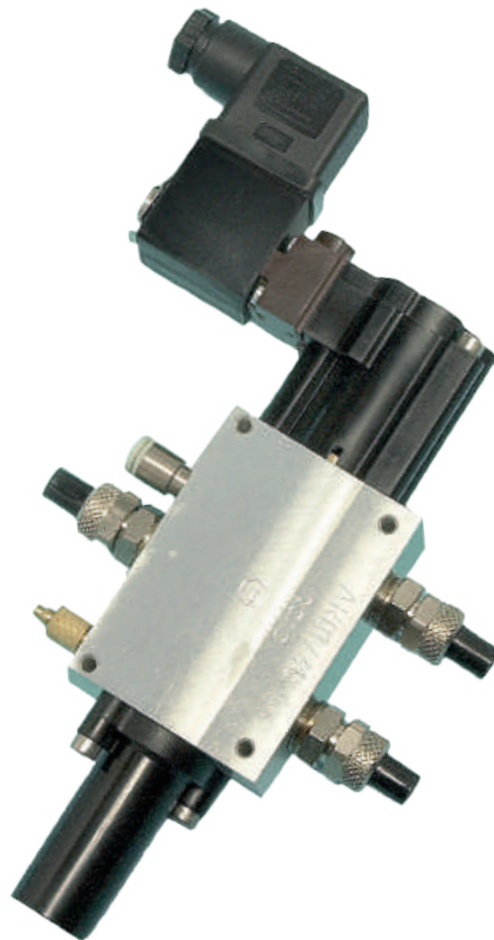
The **Y valve** is 2/3 pressurized leak-tight valve, pneumatically piloted. It can be used either ways for different purposes: It is used for any other tight application having to be leak-tight guaranteed with a Y. The most common utilization of the **Y valve** is chained for 2 cycles on two different components. A 24V solenoid mounted on the valve and is controlled either from the valve code of the instrument, either from a PLC.

Also the **Y valve** can be used for having 2 different reference volumes whenever to different components have to be tested on the line. External dump is used to avoid water, oil, dust, particles to reach the ATEQ unit when dumping through the main valve block.

It's possible to use several **Y valves** of series to test several parts by only one instrument. The **Y valve** can also be used for checking calibration of the instrument. In this case, a master calibrated leak will be installed in one of the **Y valve** output.



Mini Y valve



Y valve

Y VALVE & MINI Y VALVE

LEAK PROOF WITH INTERNAL PRESSURISATION

Measurement characteristics

CONNECTING PIPES DIAMETERS			
Valve Type	Input/Output	Control	Pressurisation
6/8 Y valve	6/8	4/6	3/5
4/6 Y valve	4/6	4/6	3/5
3/5 Y valve	3/5	4/6	3/5
Mini Y valve 2.5/4	2.5/4	4/6	-
Mini Y valve 3/5	3/5	4/6	-

Main Features

- Fluid supported → Air, Gas
- Differential pressure → 0 - 10 bar with pressurised valve compressed
- Max. allowed pressure → 12 bar
- Control fluid → Dry clean air supply
- Max. control pressure → 10 bar
- Min. control pressure → 4 bar
- PNormal control pressure → 6 bar
- Flow diameter → 4 mm (Y valve)
2 mm (mini Y valve)
- Life expectancy → 4 million cycles

Accessories

other accessories available for ATEQ leak/Flow tester

- Remote control
- Automatic couplers
- Master / leak jet



Automatic couplers



Remote control

Technical Specifications

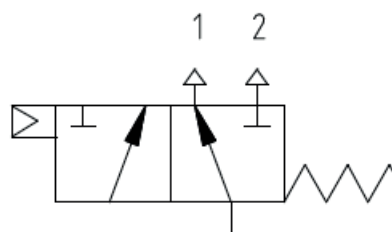
Presentation	Weight: 695 g (Y valve) 450 g (mini Y valve)
Physical	Dimensions (in mm) 110 x 27 x 190 (Y valve) 110 x 27 x 117 (mini Y valve)
Temperature	Ambiant: +0°C to +55°C

Options

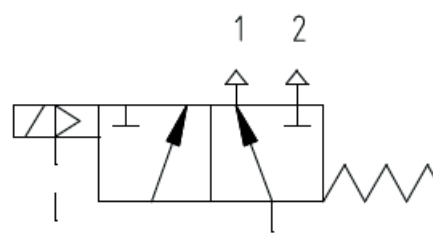
- Position detection:

The Y valve can have in option a detection of position of the drawer, in order to have the certainty of the movement of the drawer in the valve.

An indicator lights to indicate the position work of the drawer, this indicator is visible by transparency behind the plastic cap on the spring side.



Pneumatic control



Electro-pneumatic control



Master / leak jet

